

# RAPTURE

BITES

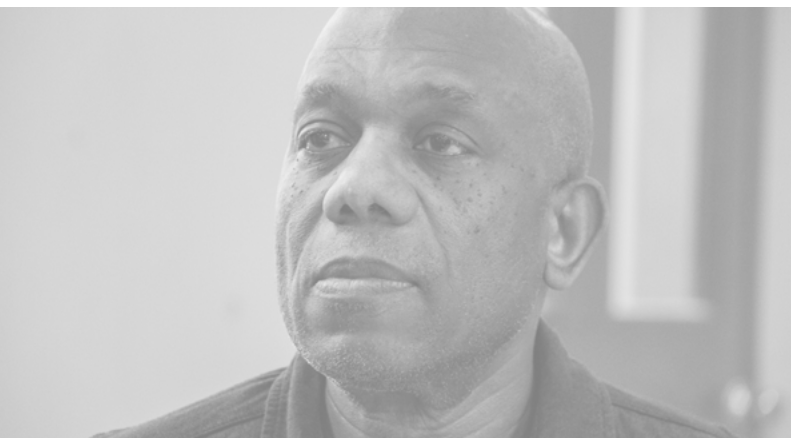
Classic Plays @Lunchtime



## A KIND OF ALASKA

Harold Pinter





Rapture has always been passionate about making great theatre for audiences wherever they live, and therefore it seemed like a great idea to create lunchtime theatre people could enjoy locally.

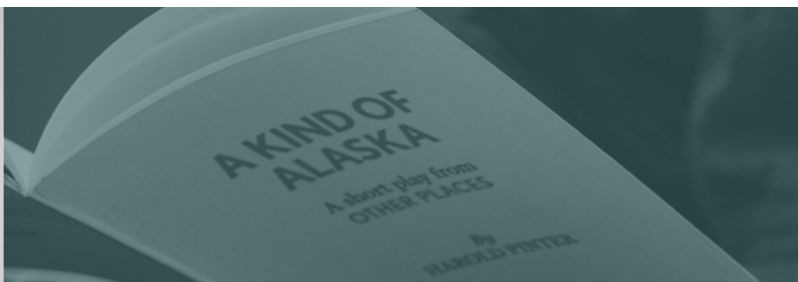
We knew there was a canon of classic one-act plays crying out for new, fresh productions and so **Rapture Bites** began, with three inspiring plays, each beautifully written and guaranteed to resonate with modern audiences, touring to seven venues throughout Scotland, from Dumfries to St. Andrews, Peebles to Irvine.

### A Kind of Alaska

Deborah was a lively sixteen-year old and part of a close knit family when she fell victim to a strange condition, a sleeping sickness. Twenty-nine years later, having been watched over by the same doctor, she awakens and gradually tries to adjust to the world around her.

To complete its Lunchtime Theatre Season, Rapture presents an unmissable brand new production of Harold Pinter's *A Kind of Alaska*, an astonishingly prescient play by one of the twentieth century's most influential writers.

Michael Emans, Director



#### Cast:

DEBORAH  
HORNBY  
PAULINE

**Gina Isaac**  
**Burt Cesar**  
**Janet Coulson**

#### Credits:

Director  
Designer  
Stage Manager  
Deputy Stage Manager

Michael Emans  
Lyn McAndrew  
Steven Scott-Fitzgerald  
Becca Mitchell

Rehearsal Photography  
Printwork & Poster Design  
Casting Director

Christina Brownlee  
Infinite Blue Designs  
Jenkins & McShane Casting

#### For Rapture Theatre:

Co-Artistic Director  
Co-Artistic Director  
Education, Press & Marketing  
Company Pets

Michael Emans  
Lyn McAndrew  
Christina Cox  
Benji and Teddy

*All proceeds from the sale of this programme are being donated to the Edinburgh Cancer Centre - Western General.*



## GINA ISAAC

Gina trained at the Central School of Speech and Drama.

**Previous Rapture Theatre:** *A Streetcar*

*Named Desire.*

**Recent theatre includes:** *Made in India* (Soho Theatre) and *The Curious Incident of the Dog in the Night-Time* (National Theatre UK Tour). Gina has worked extensively in regional and UK theatre.

**Film & TV includes:** *Fast Girls, Derek, Men Only, EastEnders, Holby City, Casualty, The Bill, Pretending to be Judith, The Queen's Lover, Walking with Shadows* and *The Father Gilbert Mysteries.*

## MICHAEL EMANS, DIRECTOR

Michael trained at Rose Bruford College of Speech and Drama.

**Previous Rapture Theatre:** *Richard III, Double Top, Boston Marriage, Twisted, Frankie and Johnny in the Clair de Lune, Proof, Misery, Blue/Orange, Damages, The Collection, Frozen, Broken Glass, Shining City, Betrayal* (2008), *Last of the Red Hot Lovers, Hamlet, Gagarin Way, The Sash, The Collection* (2013), *Shang A Lang* (2013 and 2014), *Uncle Varick, All My Sons, The Last Yankee, Democracy, Who's Afraid of Virginia Woolf?* and *A Streetcar Named Desire, The Twelve Pound Look* and *The Browning Version.*

**Theatre includes:** *Uncle Varick* and *Six Black Candles* (Royal Lyceum), *Tom Jones* (Lillian Bayliss Theatre) and *The Finishing School* (Nuffield Theatre, Southampton). He also directed the Orange Playwriting Award winning *Magnum Opus* at Oran Mor and the acclaimed *Burns on the Solway.*

## BURT CAESAR



Burt Caesar is an actor and director.

**Acting credits (Scotland) include:**

*Othello* (Royal Lyceum Theatre, Edinburgh); *Judith* (Citizens, Glasgow).

**Other Theatre:** *Serious Money* (Royal Court, London/West End/Broadway); *The Miser* (Cambridge Theatre Company); *Moon on a Rainbow Shaw* (National Theatre); *The Cherry Orchard, Noises Off* (Birmingham Rep); *Eden* (Riverside Studios); *The Plague* (Arcola Theatre); *King Lear* (Shakespeare's Globe).

He is a former Associate Director at the Royal Court and has directed several short films and various television dramas.

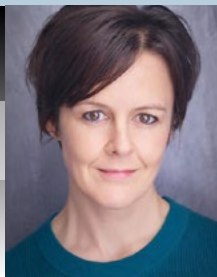
## STEVEN SCOTT-FITZGERALD, STAGE MANAGER

**Previous Rapture Theatre:** *The Browning Version, The Twelve Pound Look; A Streetcar Named Desire; Democracy; All My Sons; Shang-a-Lang* and *Uncle Varick.*

**Theatre includes:** *Aladdin* (Kings Theatre, Glasgow); *Birdsong* (Birdsong Productions); *Sleeping Beauty* (Towngate Theatre); *Shadowlands* (Birdsong Productions), *Jack and The Beanstalk* (Towngate Theatre) and *Jack and The Beanstalk* (Webster Theatre).

Steven is a graduate of Langside College in Glasgow.

## JANET COULSON



Janet trained at The Poor School and The Actors Temple in London.

**Recent credits include:** Two one-woman plays *The Matchbox* by Frank McGuinness and *Grounded* by George Brant, as well as playing Marion in *54% Acrylic*, Carol in *Oleanna*, Mhairi in *By Its Nature Uncertain*, and collaborating on the devised interactive piece *Postman's Park.*

Janet is also Co-Founder and Creative Director of Firebrand Theatre Company and enjoys singing and playing fiddle in a ceilidh band, when she's not up a hill on a bike, ideally with her two dogs!

## BECCA MITCHELL, DSM

Becca is a graduate of the Stage Management course at the Royal Central School of Speech and Drama and her recent credits include: *Edinburgh's Hogmanay* with Underbelly, *'Sno Snow* at Scottish Youth Theatre, the Offie Award winning *The Secret Lives of Baba Segi's Wives* (Arcola Theatre), Sarah Kane's *Crave* at the Barbican Pit with Julie Cunningham and Company and *Acis and Galatea* with the London Handel Festival.

# BIOGRAPHIES



RAPTURE THEATRE  
presents

# The RED LION

by  
Patrick Marber



COMING SOON

08 May - 22 Jun 2019

JOHN MCARDLE

BRENDAN CHARLESON

HARRY MACMULLIN

# Clybourne Park



BY  
BRUCE NORRIS

## TOURING THIS AUTUMN

RAPTURE THEATRE, AFTER ITS CRITICALLY ACCLAIMED PRODUCTIONS OF *Who's Afraid of Virginia Woolf?* AND *A Streetcar Named Desire*, RETURNS WITH AN EXCITING NEW PRODUCTION OF ANOTHER MODERN AMERICAN CLASSIC.

IN 1959, BEV AND RUSS ARE MOVING AFTER THE TRAGIC DEATH OF THEIR SON. INADVERTENTLY, THEY HAVE SOLD THEIR HOUSE TO THE NEIGHBOURHOODS' FIRST BLACK FAMILY.

FIFTY YEARS LATER, IN 2009, THE ROLES ARE REVERSED WHEN A YOUNG WHITE COUPLE BUYS THE SAME HOUSE IN WHAT IS NOW A PREDOMINANTLY BLACK COMMUNITY.

IN BOTH INSTANCES, RACIAL TENSIONS ESCALATE, AND THE STAKES ARE RAISED.

WINNER OF THE PULITZER PRIZE AND TONY AWARD FOR BEST PLAY AND HAILED AS "SHOCKINGLY ENTERTAINING" AND "APPALLINGLY FUNNY", *CLYBOURNE PARK* IS A RAZOR-SHARP SATIRE ABOUT THE POLITICS OF RACE.



[WWW.RAPTURETHEATRE.CO.UK](http://WWW.RAPTURETHEATRE.CO.UK)

Design by [infinitebluedesigns.co.uk](http://infinitebluedesigns.co.uk)



ALBA | CHRUTHACHAIL